

Postgre/PostGIS Tutorial

Displaying Data



University
of Colorado
Denver

Created by: Ricardo Oliveira
ricardo.oliveira@ucdenver.edu

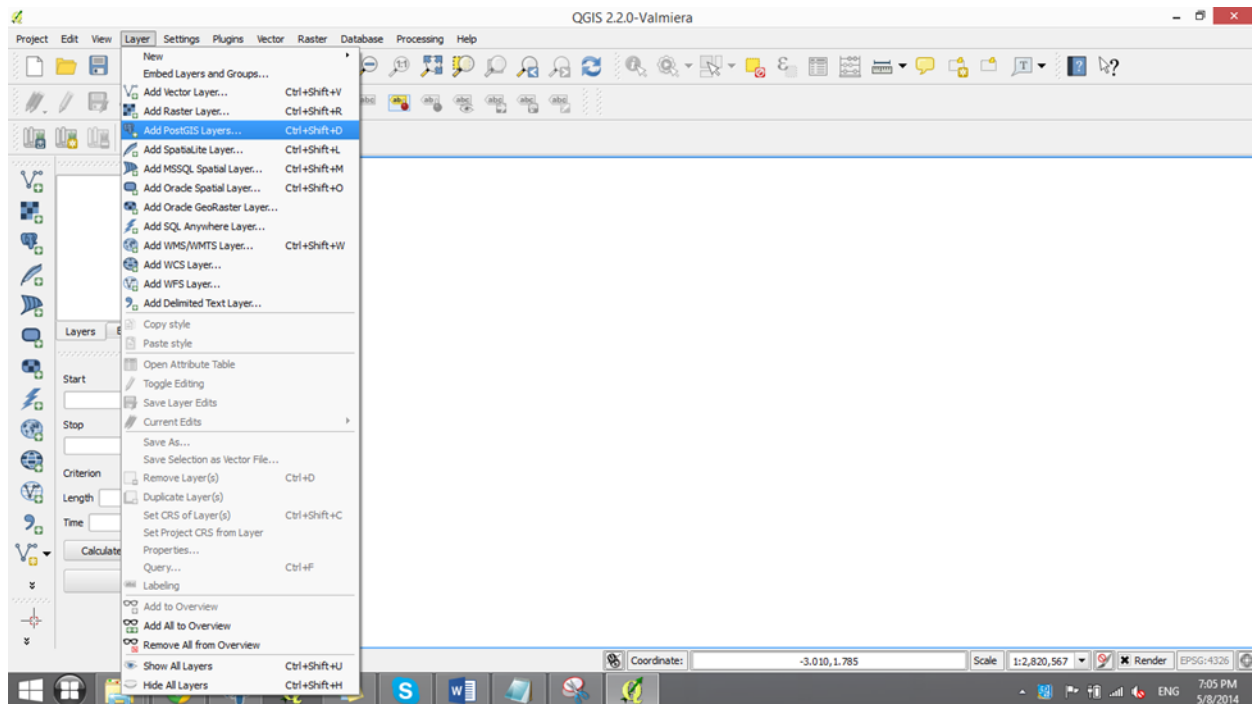
July 2014

Before we start let's add some extra data into our database. Using the same procedure of last time download from Denver Open Catalog the Street Centerline data. Also from the opencolorado.org download the DRCOG RTD Light Rail Stations data.

Be aware that your dealing with data from different sources, therefore the SRID may be different always check the .prj file

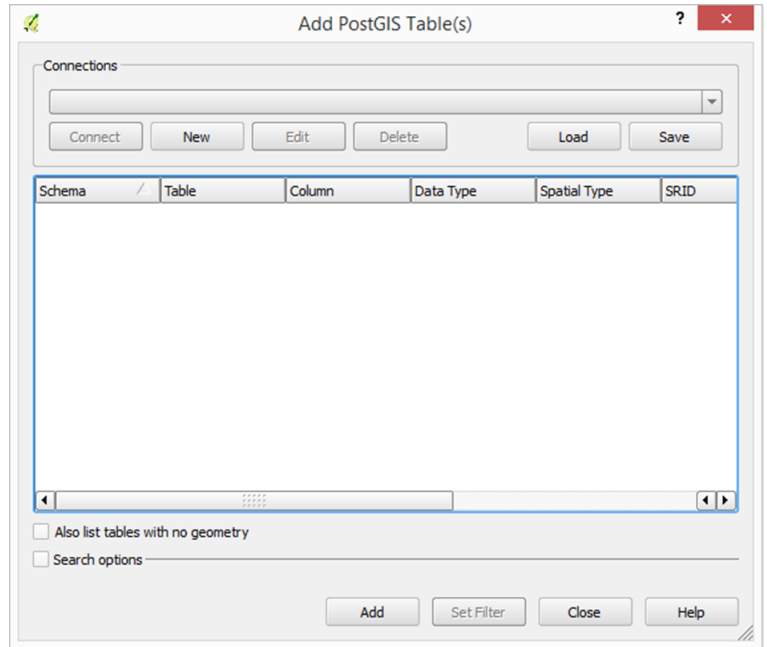
Displaying Data

Download QGIS from <http://www.qgis.org/en/site/> and install it, the process is very easy and straightforward. And once it is installed open it.

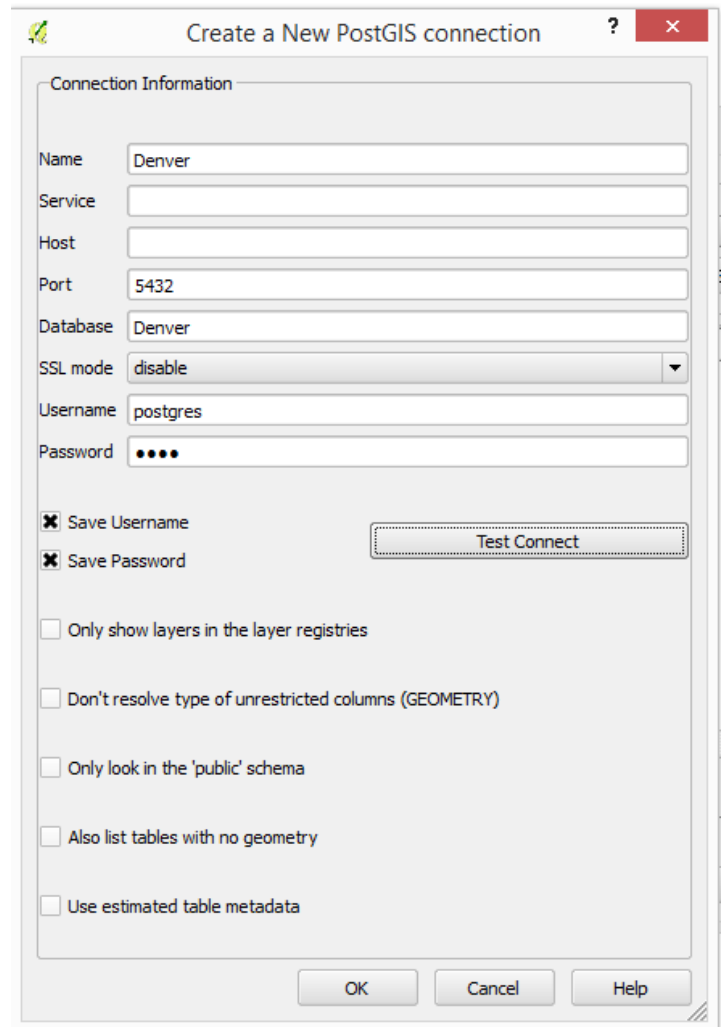


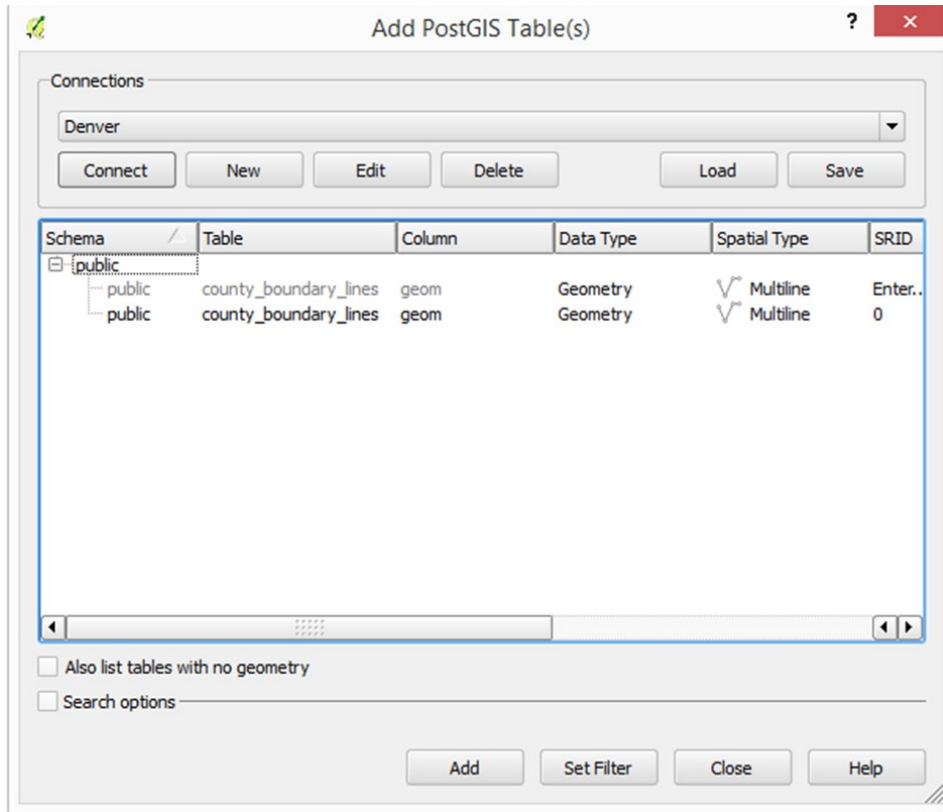
From the Layer menu click Add PostGIS Layers.

First we need to connect our Denver database with QGIS. Choose New.

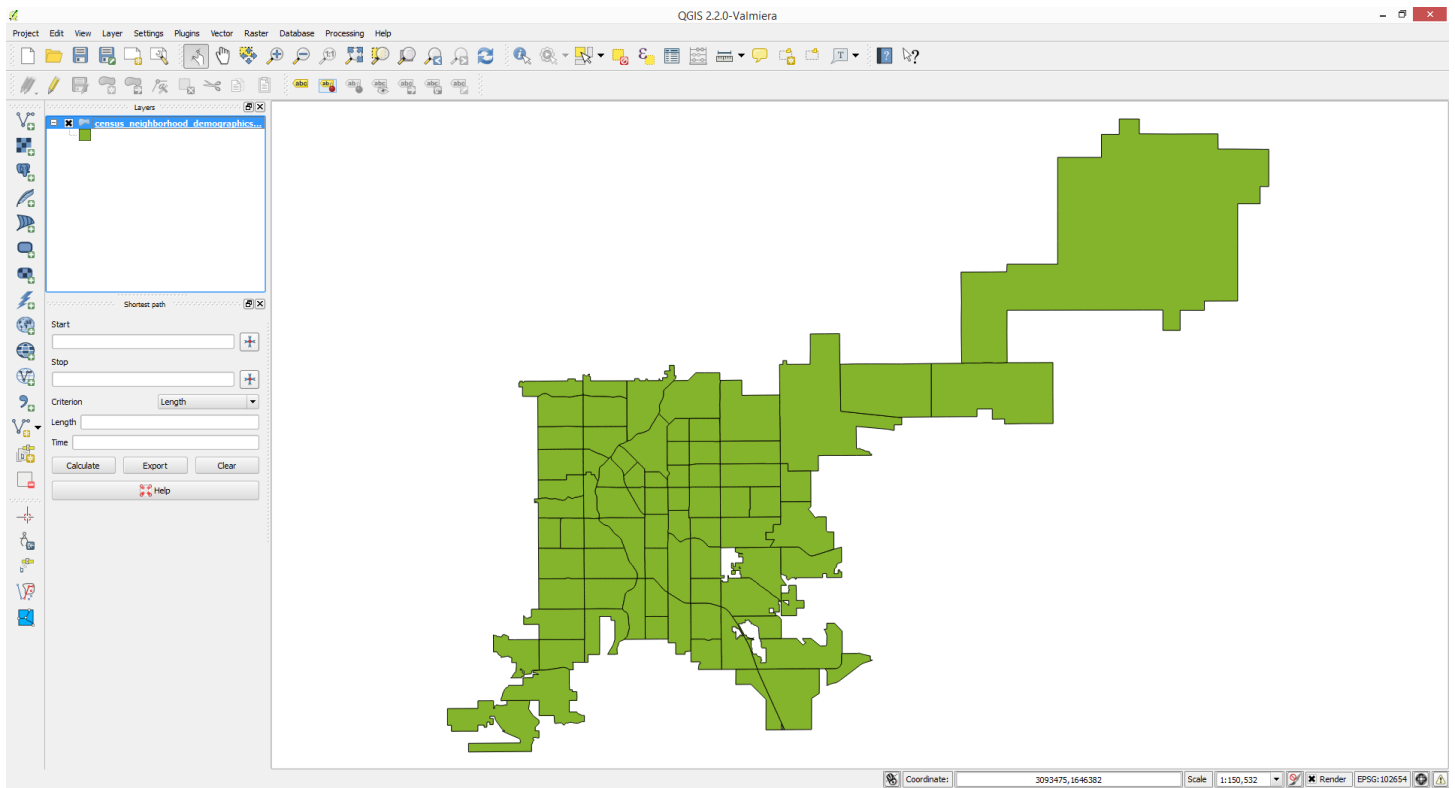


Fill the form with the name of how you want to call this new connection, the name of your original database Denver in this case, and fill the username and password. The username in this case is postgres. You can opt to store both the username and the password. Test the connection, if everything is correct press OK.





Press connect and you will see the data that we add previously. Select the data and press Add. On the screen that appears you have the option to change the projection system, just press OK.



There you have it, your first data being displayed from your first database!